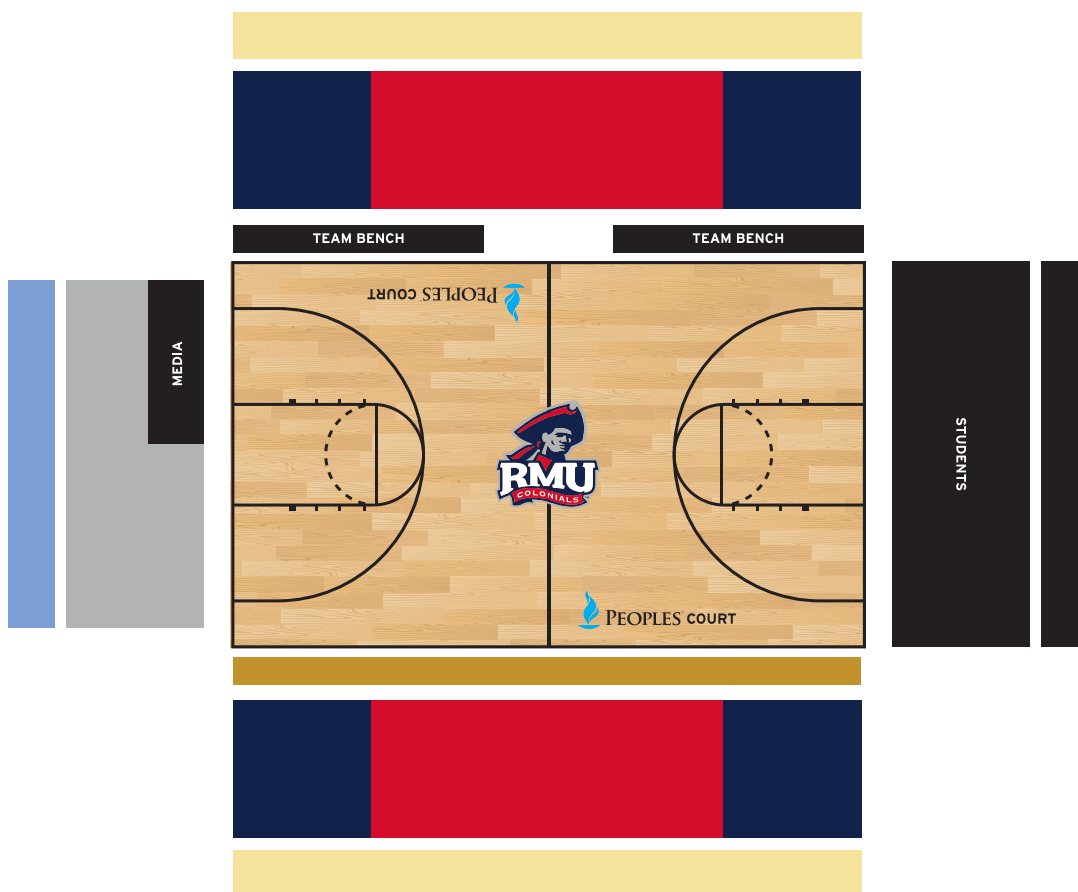











UPMC EVENTS CENTER



ALL SEASON TICKETS \$100 PER SEAT

SEATING	DONATION
 COURTSIDE *^#	\$1,500
 CENTER COURT ^#	\$1,000
 CENTER COURT #	\$500
 SIDE COURT #	\$250
 BASELINE	\$125
 UPPER SIDELINE	\$50
 UPPER SIDELINE	\$10

EXAMPLE: Adam Cole wants to buy 4 Season Tickets at center court. He would need to make a \$1,000 donation and pay \$100 per seat for the four seats. His total cost would be \$1,400.

* Maximum 2 seats per donation

^ 1921 Club Access

Includes 4 complimentary men's basketball season tickets for 2017-18 season