



RMU Trees Network June 2024 Newsletter

SAVE THE DATE!

Upcoming Special Education Conference

On Monday, October 14, 2024, the RMU Trees Network will be holding its annual Special Education Conference. This year the theme is Nurturing Potential in Every Learner. It is being held virtually to allow for more participation from special educators, administrators, paraprofessionals, and related service staff looking for professional development on important topics in special education.

SAVE THE DATE

RMU Trees Network Special Education Conference Nurturing Potential in Every Learner

October 14, 2024

A free, virtual conference with sessions on:

- Artificial Intelligence
- Math & Special Education
- Spelling & Dyslexia
- Behavior & Data Collection
- Due Process
- Support Coordinators & Waivers
- Truancy - Motivation & Discipline
- Graduation Pathways

Keynote Speaker topics:

- Mental Health
- Relationship Building

Registration begins August 1

For additional information, contact: donne@rmu.edu or hiltzd@rmu.edu

Upcoming Events Around the Area

The RMU Trees Network is a member of the Special Needs Consortium, a group of service providers in the Pittsburgh area. The Special Needs Consortium exists to provide a place where all services and opportunities can be networked, shared, promoted, and advocated for to increase awareness of resources available to



the special needs community. The following is a list of events found through our contacts and/or were shared by members of the consortium. We hope you will find something of interest to you.

June 7-9, 2024 - PA Tourette Syndrome Alliance's annual TS Family Camp

To register or for more information go to <https://patsainc.org/events/ts-family-camp>

June 8th – 6:00pm - 8:00pm - End of School Year Dance – Spectrum Club Autism Caring Center

For ages 13+. A dance for teens on the spectrum. Pizza, photo opportunities, music, and dancing. The event will be held at 1000 Horizon Vue Drive in Canonsburg.

<https://www.signupgenius.com/go/70A0B48A8A62FABFF2-49393530-endofyear>

June 9th - Live Autism Friendly Open Mic @ Band Together Clubhouse 2:00pm - 5:00pm

Band Together Clubhouse (in Moondog's) 378 Freeport Rd, Blawnox, PA

<https://bandtogetherpgh.org/event/live-autism-friendly-open-mic-band-together-clubhouse-23/>

June 11th and June 12th - Inglis SDHP Statewide Housing Conference

Inglis Self-Determination Housing of PA believes that housing is a human right and that all individuals with disabilities and older adults should have access to safe, affordable, accessible housing. This conference aims to expand choice and control in housing for individuals with disabilities and older adults through innovative workshop sessions, a thought-provoking keynote plenary, an exhibit experience, and networking opportunities.

<https://www.inglis.org/programs-and-services/inglis-community-services/self-determination-housing-of-pennsylvania-sdhp/sdhp-conference-housing-as-a-human-right>

June 15th - Beaver Valley Rockin' on the River Festival '24 - 3:00 pm - 10:00 pm,

Riverfront Park Riverfront Park, Rochester, PA

<https://bandtogetherpgh.org/event/beaver-valley-rockin-on-the-river-festival-24/>

June 16th – 22nd - CAMP FROG

Registration is now open for Camp Frog, a specially designed overnight summer camp experience for children and teens with epilepsy. This year, all camp activities will take place during **June 16-22, 2024** at Camp Fitch in North Springfield, PA (near Erie).

Campers ages 8-18 are encouraged to register. For more information or to pre-register, please contact: Brooke at bmohr@eawcp.org for more information.

<https://lp.constantcontactpages.com/sv/wyzoCDU/CampFrogPreReg2024>

June 17th or June 24th - Adaptive Pony Pals Camp - 9:00am-12:00pm

Stoneybrook Therapeutic Riding Center, Acme, PA

Participants will spend time learning about horses, riding and enjoying crafts and games all with a horse related to them.

<https://secure.ggiv.com/for/stoneybrookfoundation/event/ponypalscamp/>

June 18th - Autism Friendly Drum Circle - 7:00pm - 8:00pm

Band Together Clubhouse (in Moondog's) 378 Freeport Rd, Blawnox, PA
<https://bandtogetherpgh.org/event/autism-friendly-drum-circle/>

June 23rd - Autism Friendly Open Mic - 2:00pm - 5:00pm

The Lindsay Theater and Cultural Center 418 Walnut St., Sewickley, PA
<https://bandtogetherpgh.org/event/autism-friendly-open-mic-8/>

June 25th – 27th - INCLUDI-CON

This year's Includi-Con is designed to provide opportunities for you to Energize Engagement for Everyone! Life in schools and their respective communities has been difficult and more challenging than ever, as the impact of the pandemic for students, families and schools was fully understood and felt. Registration is closing 5/24/2024! Scholarships are available for families. Email achan@includemepa.org for more information. <https://thearcpa.org/includi-con2024registration/>

Disability Acceptance Through Literature - Contact Celia at cmorrison@includemepa.org or Jennifer at jmacsisak@includemepa.org

Title: *A Blind Guide to Stinkville*, by Beth Vrael

Group: Kids 8-12 years old

Day/Time: Thursdays, 6:00 pm – 7:00 pm

Dates: July 11 – August 29, 8 weeks

Title: *A Kind of Spark* by Elle McNicoll

Group: 'Teens' 12-17 years old

Day/Time: Wednesdays 6:00 pm – 7:00 pm

Dates: July 10 – August 14 (6 weeks)

Title: *The House in the Cerulean Sea*, by TJ Klune

Group: Young adults age 17 and up

Day/Time: Mondays 6:30 pm – 7:30 pm

Dates: July 8 – August 5 (5 weeks)

July 29th - August 9th - EVOLVE Future Camp

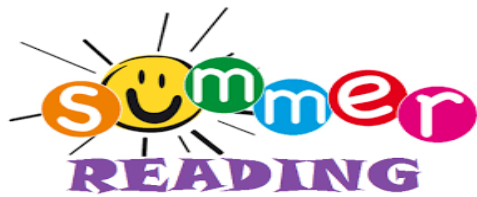
Annual two-week summer arts camp hosts neurodiverse and neurotypical learners ages 12 and up for a series of classes including writing, visual arts, animation, music, and more. In addition to classes led by teaching artists, Future Camp wraps with a celebration called "Future Fest" which features local arts programming vendors, college resource booths, and more.

https://docs.google.com/forms/d/e/1FAIpQLSd6gnk7aKVdWVU9FPr22p26V5t2j1tTT_fsneK793LHL07uaQ/viewform

August 4th - All Abilities Day at PNC Park

A portion of each ticket sold will benefit a local non-profit that uplifts and celebrates each person's uniqueness and gives them a chance to have their voice amplified. Come together as a community to help show that everyone can be a fan of baseball.

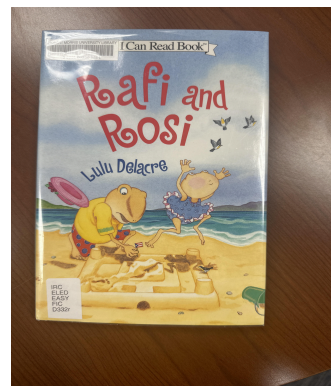
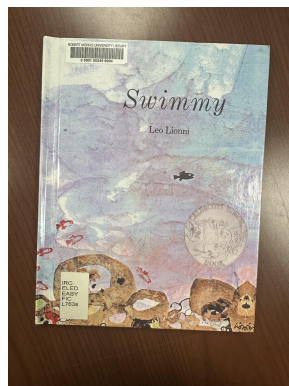
<https://fevo-enterprise.com/event/allabilities>



Summer Reading Activities and Experiences

Summer reading is critical for retaining knowledge and skills learned. Summer reading also fosters social-emotional development. The RMU Trees Network created a padlet of reading activities and resources that can be accessed by clicking this

link: [Reading activities padlet](#). Also, before our scholars headed home for the summer, they created a list of summer reading to help narrow down your search. They included a picture book and a beginner reader. For June, they suggested books based on the beach. Here were their top two: *Swimming* by Leo Lionni and *Rafi and Rosi* by Lulu Delacre. Additionally, they made a fun craft for each theme. Use this link to access a step-by-step Jellyfish craft <https://youtu.be/9MIYajKa5c8>



Resources for Parents and Educators

The Network provides resources for parents and teachers and these resources can be found at the [RMU Trees Network Website](#). Information on RMU Trees is also posted on the RMU website and the previous newsletters can be read and viewed at <https://www.rmu.edu/academics/provost/trees>. In each newsletter we provide links to resources of topics discussed in our parent meetings and workshops as well as other information that may be helpful to families, schools, and the community. This month, we are including resources about Extended School Year (ESY).



ESY Eligibility from PaTTAN [Extended School Year](#)

PA Department of Education ESY Eligibility [PA Dept of Ed](#)

ESY Services in Pennsylvania from PaTTAN [ESY Guide](#)

Standards for Extended School Year from Wright's Law https://www.wrightslaw.com/info/esy_standards_barlev.htm

RMU Trees Network Contact

6001 University Boulevard
335 Patrick Henry Trees Network Office Suite
Moon Township, PA 15108

Vicki Donne, RMU Trees Network Director,
University Professor, Education Department, SNEHS
donne@rmu.edu
412-397-5465

Deanna Hiltz, RMU Trees Network Outreach Specialist, Part-Time Faculty
hiltzd@rmu.edu
412-397-6058
[RMU Trees Website](#)
<https://www.facebook.com/RMUtrees/>

